

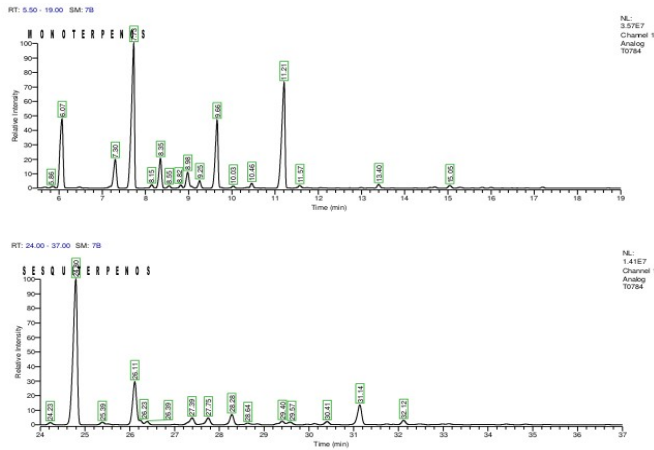
TERPENES TEST REPORT

Client name: Cibdol	Type of sample: oil
Date of delivery: 22-05-2017	Humidity:
Sample: Terpene Oil 190517	Comments:
Date of analysis: 05-06-2017	N.I laboratory: M17-T0784

MONOTERPENES

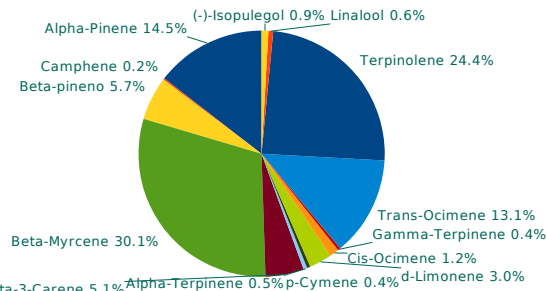
Alpha-Pinene	11.200%
Camphene	0.162%
(-)-beta-Pinene	4.400%
Beta-Myrcene	23.200%
delta-3-Carene	3.900%
Alpha-Terpinene	0.350%
p-Cymene	0.344%
d-Limonene	2.300%

CHROMATOGRAM



MONOTERPENES RELATIVE RATIO

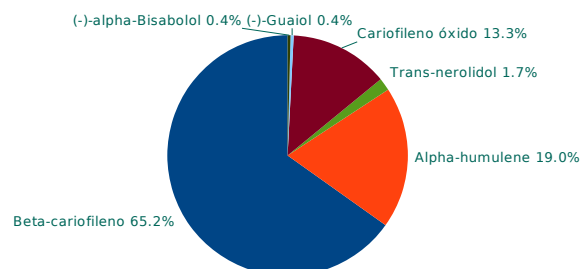
Eucaliptol	--
Cis-Ocimene	0.942%
Gamma-Terpinene	0.286%
Trans-Ocimene	10.100%
Terpinolene	18.800%
Linalool	0.478%
(-)-Isopulegol	0.674%
Geraniol	N.D.



SESQUITERPENES

Beta-caryophyllene	11.300%
Alpha-humulene	3.300%
Cis-Nerolidol	N.D.
Trans-nerolidol	0.298%
Caryophyllene oxide	2.300%
(-)-Guaiol	0.072%
(-)-alpha-Bisabolol	0.068%

SESQUITERPENES RELATIVE RATIO



N.D. = <0.04%